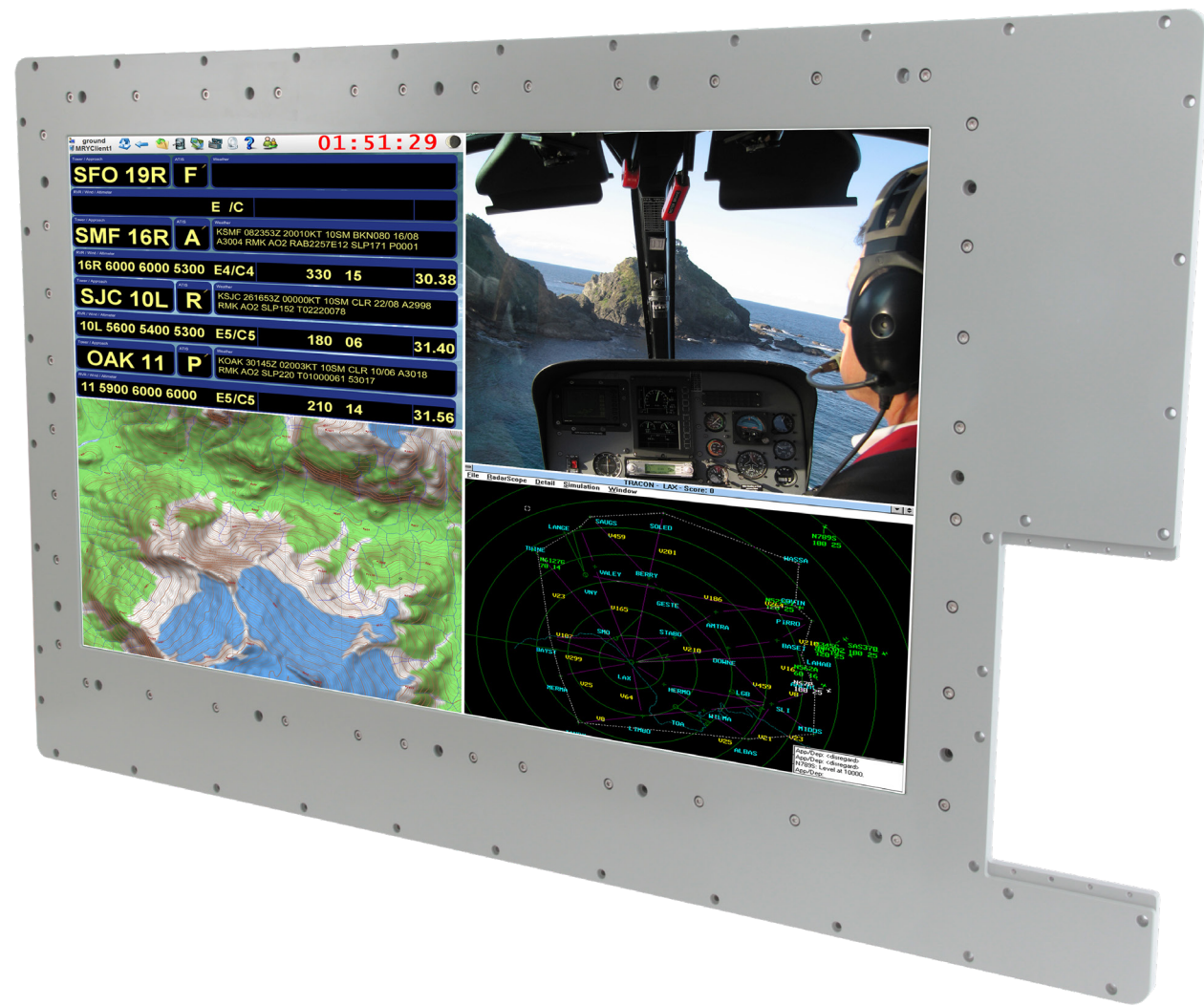


# PRODUCT CATALOG

## TITAN SERIES

large format military-/industrial-grade lcd monitors





The rugged Titan™ Series was designed to satisfy the increasing demand for information density. This adaptable product line can be custom configured to meet your specific military, industrial or commercial requirements. The following pages many of our most popular large format configurations. Contact General Digital for a no-obligation consultation.

**TITAN PANELMOUNT**

IDENTIFICATION		DISPLAY			OVERLAY	VIDEO INPUT							POWER		ENVIRONMENTAL	SPECIAL
Model Number	Part Number	Size (inches)	Resolution (Pixels)	Brightness (Nits)	Type(s)	ARGB	DVI	HDMI	Composite (NTSC)	S-Video	DisplayPort	Factory Port	Input Voltage	Max. Power (Watts)	Attributes	Notable Components and Features
TP-32K-856-125-00-27-93-IP74	90-3320-008	32.0"	3840 x 2160	250	Antireflective; EMI Shielded; Optically Bonded	✓	✓	✓	—	—	✓	✓	90–264 Vac	—	MIL-DTL-901 Compliant; MIL-STD-461 Compliant; MIL-STD-167 Compliant	4K Display; Integrated Speakers; +24 Vdc → +12 Vdc Converter
dTP-39D-846-35-00-14-72-EP08-160	90-3390-005	39.0"	1920 x 1080	350	Projected Capacitive Touch Screen with EMI Shielding	✓	✓	—	✓	✓	—	—	85–264 Vac	—	Daylight Readable	Custom Firmware Supports ARGB2; Custom Video Timing; Remote OSD Connector; Internal DC-DC Converter; Auto Power On; Custom Enclosure Design; Integrated Video Generator; Flip Switch Custom OSD Interface; Battleship Gray Bezel
dTP-40D-847-60-00-14-00-IP57-168	90-3400-002-A	39.5"	1920 x 1080	350	—	✓	✓	—	✓	✓	—	—	85–264 Vac	—	Daylight Readable	Internal Video Generator Board; Internal Cable Tuner; Audio/video Interface Board; Video Add-on Board; Remote OSD Connector; Internal DC-DC Converter; Auto Power On; Custom Enclosure Design; Custom Video Timing; Custom OSD Interface; VLS D Compliant
dTP-42D-850-135-00-14-82-IA08	90-3420-010	42.0"	1920 x 1080	400	Projected Capacitive Touch Screen	✓	✓	✓	✓	—	—	✓	85–264 Vac	—	Daylight Readable; Bezel NEMA 4 Sealed	—
dTP-65K-xxx-119-00-58-xx-IP97	90-3645-016	64.5"	3840 x 2160	450	Projected Capacitive Touch Screen	—	✓	✓	—	—	✓	—	90–264 Vac	—	Daylight Readable; IP65 Drip-proof from Top	4K Display; OSD Ethernet Control; +24 Vdc (Backlights) /+12 Vdc (System)
dTP-65K-xxx-119-00-58-xx-IP97	90-7645-003	64.5"	3840 x 2160	450	Projected Capacitive Touch Screen	—	—	—	—	—	✓	—	90–264 Vac	—	Daylight Readable; IP65 Drip-proof from Top	+24 Vdc (Backlights) /+12 Vdc (System); 4K Smart Display System Includes: 500 GB SSD w/Hot-swap Access; Nvidia RTX 2060 Video; GigE (x2) Ethernet; 16 GB Total System RAM; Intel i7-6822EQ, i7 Quad-Core, 2.0 GHz Base, 25 W, 8 MB L3 Cache CPU



**PROPRIETARY NOTICE**

Information contained in this document is proprietary to General Digital Corporation and is current as of publication date. This document may not be modified in any way without the express written consent of General Digital. General Digital reserves the right to change the configuration and performance of the product and to discontinue product at any time. The appearance of U.S. Department of Defense (DoD) visual information does not imply or constitute DoD endorsement.

TITAN STANDALONE

IDENTIFICATION		DISPLAY			OVERLAY	VIDEO INPUT							POWER		ENVIRONMENTAL	SPECIAL
Model Number	Part Number	Size (inches)	Resolution (Pixels)	Brightness (Nits)	Type(s)	ARGB	DVI	HDMI	Composite (NTSC)	S-Video	DisplayPort	Factory Port	Input Voltage	Max. Power (Watts)	Attributes	Notable Components and Features
dTS-40D-847-60-00-14-00-IP57-177	90-3400-003-A	40.0"	1920 x 1080	350	—	✓	✓	—	✓	✓	—	✓	85–264 Vac	—	Daylight Readable	Internal DC-DC Converter, +5 VDC Out for tuner; Speaker Power Output +5V (15W Max), +12V (15.6W Max); Auto Power On; Integrated Video Generator; Integrated Cable Tuner (NTSC/ATSC/QAM); Custom Video Timing for Customer Server; Custom Audio PCB; Custom OSD Interface; Remote OSD Connector Located on System Connector Panel
dTS-40D-847-104-00-14-18-IP62	90-3400-006	39.5"	1920 x 1080	430	Antireflective Acrylic Vandal Shield	✓	—	✓	—	—	✓	—	85–264 Vac	—	Daylight Readable; Ruggedized for Shock and Vibration	—
dTS-40D-847-117-00-14-18-IP62	90-3400-007	39.5"	1920 x 1080	430	Antireflective Acrylic Vandal Shield	✓	✓	✓	—	—	—	✓	85–264 Vac	—	Daylight Readable; Ruggedized for shock and vibration	Control Over Ethernet; 2.5mm Phono Jack for Programming Port
dTS-42D-850-121-00-14-18-IP62	90-3420-003	42.0"	1920 x 1080	450	Antireflective Acrylic Vandal Shield	✓	✓	—	✓	✓	—	—	85–264 Vac	70	Daylight Readable	—
dTS-42D-850-117-00-14-97-IA74	90-3420-008	42.0"	1920 x 1080	450	Antireflective; EMI Shielded	✓	✓	✓	—	—	—	✓	85–264 Vac	80	Daylight Readable; MIL-STD-810 Compliant; MIL-STD-461 Compliant	—
TS-43K-xxx-125-00-14-98-IP62	90-3430-001	42.5"	3840 X 2160	300	Antireflective Vandal Shield; EMI Shielded	—	—	—	—	—	✓	—	85–264 Vac	—	Drip-Proof at 15° Angle; MIL-STD-167 Compliant; MIL-STD-461 Compliant; MIL-STD-810 Compliant	4K Display; VESA Power Savings Disabled; Removeable Handles; GDC Video Equalizer Board; FED-STD-595C Color 37038; Military Connectors
dnTS-49K-865-125-00-14-18-IP62	90-3490-001	49.0"	3840 x 2160	500/20	Antiglare Acrylic	—	✓	✓	—	—	✓	✓	85–264 Vac	100	Daylight Readable; NVIS Compatible; Ruggedized for Shock and Vibration	4K Display; GDC Dual Mode: VESA Mount
dTS-50D-xxx-142-00-14-xx-IP74	90-3500-002	50.0"	1920 x 1080	400	Polycarbonate; EMI Shielded	✓	✓	✓	✓	—	—	—	90–264 Vac	—	Daylight Readable Display; MIL-STD-461 Compliant; MIL-STD-810 Compliant	Military Power Connector



**PROPRIETARY NOTICE**

Information contained in this document is proprietary to General Digital Corporation and is current as of publication date. This document may not be modified in any way without the express written consent of General Digital. General Digital reserves the right to change the configuration and performance of the product and to discontinue product at any time. The appearance of U.S. Department of Defense (DoD) visual information does not imply or constitute DoD endorsement.

TITAN STANDALONE

IDENTIFICATION		DISPLAY			OVERLAY	VIDEO INPUT							POWER		ENVIRONMENTAL	SPECIAL
Model Number	Part Number	Size (inches)	Resolution (Pixels)	Brightness (Nits)	Type(s)	ARGB	DVI	HDMI	Composite (NTSC)	S-Video	DisplayPort	Factory Port	Input Voltage	Max. Power (Watts)	Attributes	Notable Components and Features
dTS-55D-849-121-00-14-18-IP62	90-3550-002	54.6"	1920 x 1080	500	Antireflective; Vandal Shield	✓	✓	–	✓	✓	–	–	85–264 Vac	130	Thermal Sensor	Daylight Readable
dTS-55K-859-125-00-14-107-IP74	90-3550-007	54.6"	3840 x 2160	360	Polycarbonate; EMI Shielded	–	✓	✓	–	–	✓	–	90–264 Vac	–	Daylight Readable; MIL-STD-461 Compliant	4K Display; Control over Ethernet; Military Power Connector
dTS-55D-849-138-00-14-107-IP74	90-3550-009	54.6"	1920 x 1080	400	Polycarbonate; EMI Shielded	✓	–	✓	–	–	✓	–	90–264 Vac	–	Daylight Readable; MIL-STD-461 Compliant	Military-style Power Connector; IR Sensor for Remote Control
TS-65K-858-125-00-58-97-IP97	90-3645-012	64.5"	3480 x 2160	340	Polycarbonate; EMI Shielded	✓	✓	✓	–	–	✓	✓	85–264 Vac (x2)	180	Ruggedized Enclosure; Internal EMI Power Line Filter	4K Display; Power Factor Correction on Both Supplies
TS-65D-xxx-119-00-58-97-IP97	90-3645-013	64.5"	1920 x 1080	320	Polycarbonate; EMI Shielded	✓	✓	✓	–	–	✓	✓	85–264 Vac (x2)	180	Internal EMI Power Line Filter	Ruggedized Enclosure; Internal EMI Power Line Filter; Power Factor Correction on Both Supplies
dTS-65K-xxx-119-00-58-xx-0094	90-3645-015	64.5"	3840 x 2160	450	Laminated Glass, Chemically Strengthened	–	✓	✓	–	–	✓	–	+24 Vdc	–	Daylight Readable	4K Display; Vertical Keypad Located on Rear of System; Control Over Ethernet; External RS-232 OSD Control
TS-65D-xxx-135-00-58-xx-IP97	90-3645-017	64.5"	1920 x 1080	320	Polycarbonate Antiglare	✓	✓	✓	✓	–	–	✓	85–264 Vac (x2)	180	Ruggedized Enclosure	Power Factor Correction on Both Supplies
TS-65D-xxx-104-00-58-102-IP97	90-3645-018	64.5"	1920 x 1080	320	Polycarbonate; EMI Shielded	–	✓	✓	–	–	✓	✓	85–264 Vac (x2)	180	Ruggedized enclosure; Internal EMI Power Line Filter	Power Factor Correction on Both Supplies; IR Sensor for Remote Control; GDC Video Input PCB with Extra DP & HDMI inputs; Military-style Power and Factory Programming Connectors



**PROPRIETARY NOTICE**

Information contained in this document is proprietary to General Digital Corporation and is current as of publication date. This document may not be modified in any way without the express written consent of General Digital. General Digital reserves the right to change the configuration and performance of the product and to discontinue product at any time. The appearance of U.S. Department of Defense (DoD) visual information does not imply or constitute DoD endorsement.